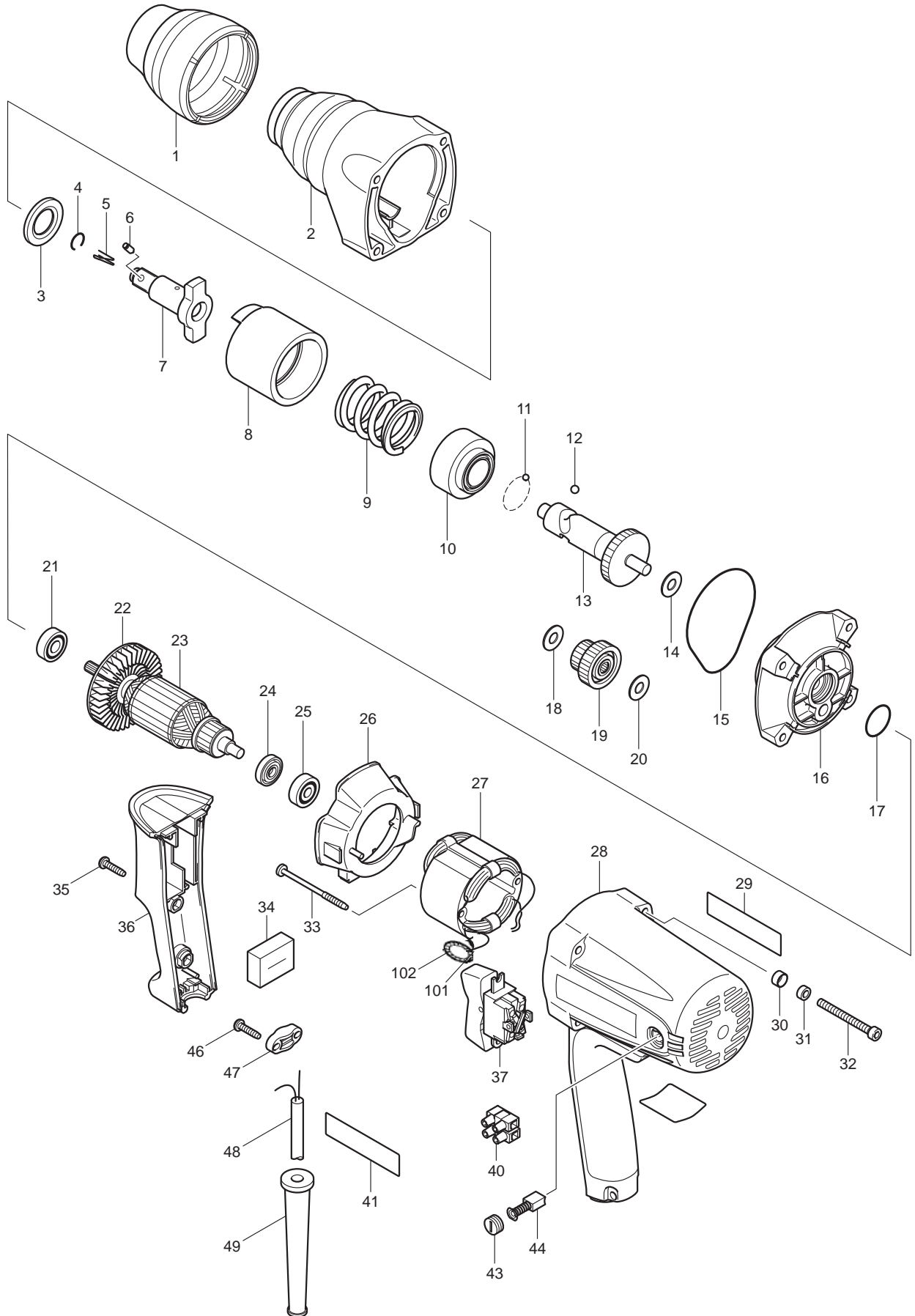




11 - 2009
TW0350
1/2" IMPACT WRENCH



Item No	Type	Ref	Part No	Description	Qty	Unit
1			421837-6	BUMPER	1	PC.
2			153623-4	HAMMER CASE COMPLETE	1	PC.
		INC.	213257-6	OIL SEAL 18	1	PC.
		INC.	321119-5	SLEEVE 18	1	PC.
3			267268-3	FLAT WASHER 19	1	PC.
5			322045-1	CLIP	1	PC.
6	1		323675-1	* PIN 4 (ROUND HEAD)	1	PC.
	2		268098-5	* PIN 4 (FLAT HEAD)	1	PC.
7			324405-3	ANVIL	1	PC.
8			324336-6	HAMMER	1	PC.
9			233383-5	COMPRESSION SPRING 28	1	PC.
10			313115-7	SPRING HOLDER	1	PC.
11			216008-6	STEEL BALL 4	19	PC.
12			216007-8	STEEL BALL 6.4	2	PC.
13			324338-2	SPINDLE	1	PC.
14			253139-0	FLAT WASHER 8	1	PC.
15			421838-4	SEAL RING	1	PC.
16			153624-2	HAMMER CASE COVER COMPLETE	1	PC.
17			213373-4	O RING 22	1	PC.
18			253139-0	FLAT WASHER 8	1	PC.
19			153626-8	SPUR GEAR 19-41 COMPLETE	1	PC.
20			253139-0	FLAT WASHER 8	1	PC.
21			210024-0	BALL BEARING 608LLU	1	PC.
22			241884-9	FAN 60	1	PC.
23			515261-4	ARMATURE ASS'Y 115V	1	PC.
		INC.		Item No. 21,22,24,25		
24			681614-0	INSULATION WASHER	1	PC.
25			210025-8	BALL BEARING 627LLB	1	PC.
26			418180-2	BAFFLE PLATE	1	PC.
27			625161-1	FIELD 115V	1	PC.
28	1		183604-4	* MOTOR HOUSING	1	PC.
		INC.	643455-2	* BRUSH HOLDER 6X9	2	PC.
		INC.		* Item No. 29,41		
	2		153625-0	* MOTOR HOUSING	1	PC.
		INC.	643455-2	* BRUSH HOLDER 6X9	2	PC.
29	1		819064-1	* MAKITA MARK (Old)	1	PC.
30			253929-1	CUP WASHER 5	4	PC.
31			262001-8	URETHANE RING 5	4	PC.
32			266331-9	HEX. SOCKET HEAD BOLT M5X50	4	PC.
33			266091-3	TAPPING SCREW 4X50	2	PC.
35			265995-6	TAPPING SCREW 4X18	2	PC.
36			418179-7	HANDLE COVER	1	PC.
37			651572-4	SWITCH SL220SD-19	1	PC.
40			654531-7	TERMINAL BLOCK 2P	1	PC.
41	1		819064-1	* MAKITA MARK (Old)	1	PC.
43			643550-8	BRUSH HOLDER CAP 5-8	2	PC.
44	1		191938-1	CARBON BRUSH CB-408 2PC/SET (W/O ORIGIN)	1	SET
	2		195008-8	CARBON BRUSH CB-408 2PC/SET (W/ ORIGIN)	1	SET
46			265995-6	TAPPING SCREW 4X18	2	PC.
47			687063-9	STRAIN RELIEF	1	PC.
48			664064-4	CORD W/PLUG 2P-18-2.5M, SJ	1	PC.
49			682559-5	CORD GUARD 8	1	PC.
100			654037-5	INSLTED TERMINAL FK1.25-M3	4	PC.

Item No	Type	Ref	Part No	Description	Qty	Unit
101			654501-6	TERMINAL P-1.25	2	PC.
102			654100-4	GARTER SPRING	2	PC.

ACCESSORIES - See catalogue or visit www.makita.ca for optional accessory -

A01			824702-2	PLASTIC CARRYING CASE	1	PC.
	INC.		186347-7	SLIDE LATCH SET	1	SET
A02			134874-8	EXTENSION BAR 12.7 ASSY	1	PC.
A03			134877-2	UNIVERSAL JOINT 1/2" - LARGE	1	PC.
A04			134873-0	BIT ADAPTOR ASSY	1	PC.
A05			194485-1	FLAT PIN 4 SET	1	PC.
	INC.		268098-5	PIN 4 (FLAT HEAD)	1	PC.
	INC.		322045-1	CLIP	1	PC.
	INC.		345842-8	HOOK (Not available as an individual part)	1	PC.
A06			195871-9	DRILL BIT REMOVER SET	1	PC.

SERVICE CHANGES

1. Changes on Pin 4

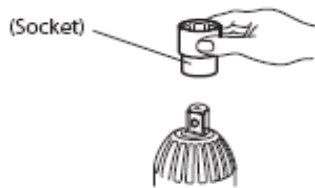
(T/I# 76108)

Item No.	Description	Type 1	Type 2
6	PIN 4	323675-1 (Round head)	268098-5 (Flat head)

*For easy conversion, use Flat Pin 4 Set (194485-1) (Item No. A05).

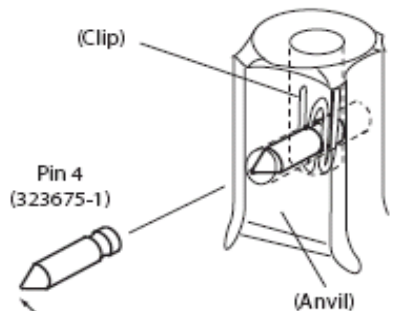
TYPE1:

Removing way of the socket:
Simply pull the socket off.

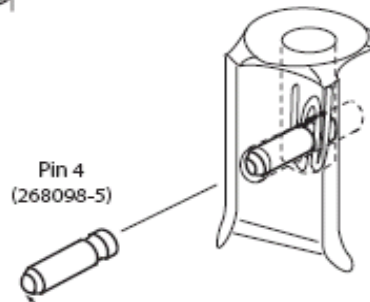


TYPE2:

Removing way of the socket:
Depress the detent pin through the hole in the socket and pull the socket off the anvil.



The contact point against socket



The contact point against socket is larger than the current one.

2. Changes on Motor Housing

(T/I# 84418)

Item No.	Description	Type 1	Type 2
28	Motor Housing	323675-1 (Round head)	268098-5 (Flat head)
29, 41	Makita Mark	819064-1	-----

Above parts are completely interchangeable as a set.